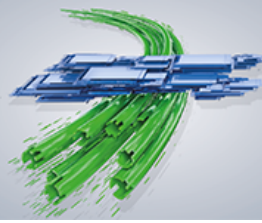




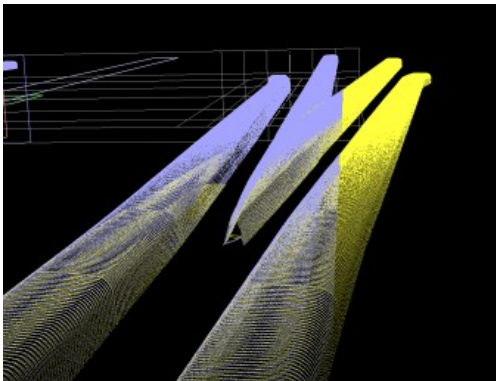
InnoTrans 2018
18-21 SEPTEMBER
BERLIN



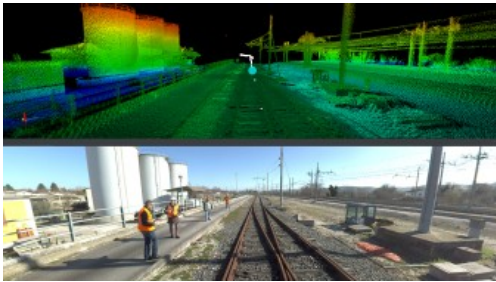
**INNOVATIONS
AND TRENDS**



Rail track Analyzer: Software application for 3D data analysis of the railway environment



3D digital twin of a turnout crossing



3D digital twin of a railroad area

Rail track Analyzer is a specific software tool of the "Loccioni Railway Suite" that allows to represent, analyse and process railway environment data in form of cloud points and images, collected by the Felix® robot or other instruments. The measurement systems of the Felix® robot acquire the data in compliance to specific safety and metrological requirements. The raw-data generated by these instruments can be processed by Rail track Analyzer to obtain the digital twin of the infrastructure and then, each scanned object can be visualized, recognized as a specific asset and hence measured thanks to dedicated mathematical algorithms and features similar to those used by the Computer Aided Design.

Loccioni

Italy - Angeli di Rosora

25, 402

Contact: Paolo Moscatelli

Phone: +39 335 5769331

p.moscatelli@loccioni.com

www.loccioni.com

Subject to further change