



**InnoTrans 2018**  
18–21 SEPTEMBER  
BERLIN

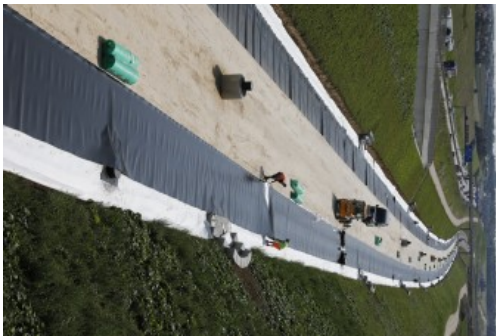


**INNOVATIONS  
AND TRENDS**

## Carbofol® in railway constructions



Carbofol® with structure-embossed surface on the new railway track Wendlingen-Ulm PFA2.3



New railway track Wendlingen-Ulm: sealing underneath the railway track to protect groundwater

Geosynthetics are used in railway construction predominantly in the field of earthworks. Since November 2015 there is a new guideline “Technical requirements for geosynthetics in railway constructions (DBS 918 039)”, published by DB Netz AG. Within this new DBS 918 039 several geosynthetic applications and the corresponding technical requirements are defined. Besides the conventional applications there are also new applications like groundwater protection where geosynthetics are used. Geomembranes like Carbofol® work as a sealing underneath the railway track to protect groundwater e. g. in water protection areas.

**NAUE GmbH & Co. KG**  
**Germany - Espelkamp-Fiestel**  
**5.2, 315**

Contact: Markus Hempel  
Phone: +49 172 5297720  
[m.hempel@naue.com](mailto:m.hempel@naue.com)  
[www.naue.com](http://www.naue.com)

Subject to further change