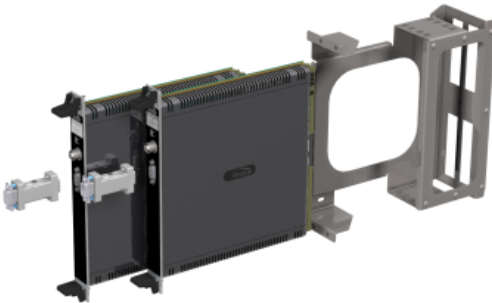




## Fail-safe remote power controller



Dual ethernet system for TCMS and traction control subsystems



Standalone electronic module integration inserted in 2-slot rack

Leroy Automation presents its EN 50155-compliant hardware platform for on-board train control systems. The IP-based product incorporates multiple high-power output channels featuring: real-time current monitoring, user-programmable breaker tripping curves, PWM capability and ON/OFF current curve recording. It is highly reliable and designed to meet SIL2 safety level requirements. The module includes cybersecurity elements such as HTTPS and advanced hardware encryption. Applications are UIC 559-compliant remote monitoring for operators' maintenance activities; sequencing/monitoring of power-up/shutdown of electrical subsystems; multi-channel digital circuit breakers to optimize electrical cabinets; lighting subsystem control unit; DC motor control (H-bridge).

### **Leroy Automation**

**France - Labege**

**3.2, 301**

Contact: Sebastien Maury

Phone: +33 668 535286

[sales@leroy-autom.com](mailto:sales@leroy-autom.com)

[www.leroy-automation.com](http://www.leroy-automation.com)