



**CDR series: Changeover disconnecter / earthing switch**



Earthing switches with safety interlocks



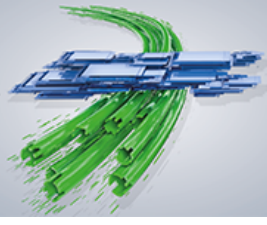
Mixed type moving contacts (earthing/line) assembled in one CDR system for more compact installation

The CDR series can be used in a wide range of applications: as changeover switches, earthing switches, disconnectors, security system isolators. In rolling stock, CDR series components are used to perform series/parallel switching between the winding of drive motors, brake resistors and earthing switches. They are constituted by a body of compact modular structure and enable various solutions with optimal functioning even for high short-circuit currents. They can be enclosed in a metal case and mounted externally on the roof or under the coach floor: they work reliably in any installation position. They can be of four different types: manual or motorized, or with direct or independent torque movement. Upon request the system can be supplied with interlocking keys. ELERON has filed a patent application for CDR.

**ELERON POWER**  
Italy - Andezeno (TO)  
9, 203



**InnoTrans 2018**  
18-21 SEPTEMBER  
BERLIN



**INNOVATIONS  
AND TRENDS**

Contact: Mattia Estavio  
Phone: +39 011 9434503  
[m.estavio@eleron.it](mailto:m.estavio@eleron.it)  
[www.eleron.it](http://www.eleron.it)