



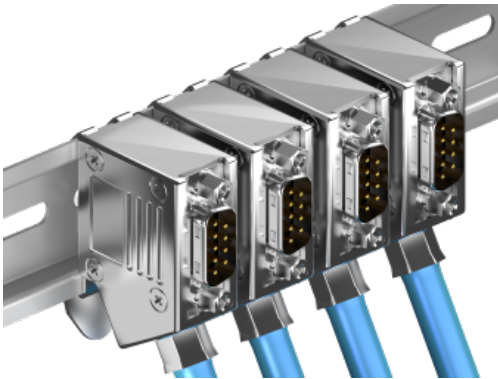
**InnoTrans 2018**  
18-21 SEPTEMBER  
BERLIN



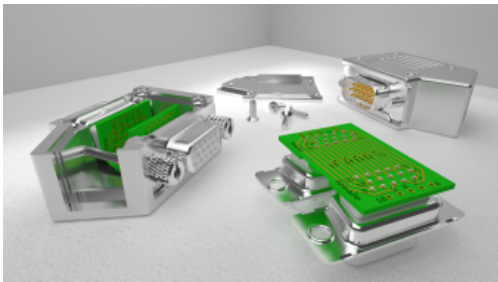
**INNOVATIONS  
AND TRENDS**



## D-Sub diagnostic plug and top hat rail adaptors



The compact DGA09M11 with top hat rail adaptor allows high packing closeness.



World premiere of HD15 diagnostic plugs with integrated flex-rigid circuit board at InnoTrans

Inotec electronics, specializing in EMC-compliant connector solutions and offering the largest range of full-metal D-Sub connectors worldwide will present the world's first HD15 diagnostic plug for free assembly, based on flex-rigid PCB technology. This 1:1 diagnostic plug has been designed for 15-way HD interconnections and may serve as an intermediate plug to integrate diagnostic tools on device controls in automation systems. The conductors of the diagnostic cable can be soldered directly to the flex-rigid PCB, developed in cooperation with Würth Elektronik. Further highlights: Inotec D-Sub M11-series adaptor hoods as an approved base for EMC-compliant special assemblies. The updated hood design provides improved compatibility with various Inotec features like the original Inotec coding system, slide-locks or an integrated snap arm for top-hat rail mounting.

**Inotec electronics GmbH**

**Germany - Lauffen a. N.**

**12, 201The compact DGA09M11 with top-hat rail adaptor allows high packing densities e. g. in switching cabinets or controllers.**

Contact: Martin Danielczick

Phone: +49 7133 980012

[danielczick@inotec-electronics.com](mailto:danielczick@inotec-electronics.com)

[www.inotec-electronics.com](http://www.inotec-electronics.com)

Subject to further change