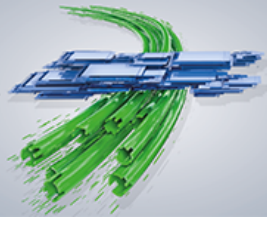




**InnoTrans 2018**  
18-21 SEPTEMBER  
BERLIN



**INNOVATIONS  
AND TRENDS**

## New cylindrical roller bearing cage design for high performance railway gearboxes



MPEA cage design for cylindrical roller bearings

Kugel- und Rollenlagerwerk Leipzig GmbH (KRW) presents the new MPEA cage design for cylindrical roller bearings at InnoTrans this year. The design was tested for its potential using a design-accompanying finite element analysis and a practical test at the TU Bergakademie Freiberg. All results clearly show the increased performance. Many European gear manufacturers already trust the MPEA design and equip their products with KRW cylindrical roller bearings.

**Kugel- und Rollenlagerwerk Leipzig GmbH**  
Germany - Leipzig  
21, 402

Contact: Karolin Helmecke  
Phone: +49 341 453214

[marketing@krw.de](mailto:marketing@krw.de)  
[www.krw.de](http://www.krw.de)

Subject to further change