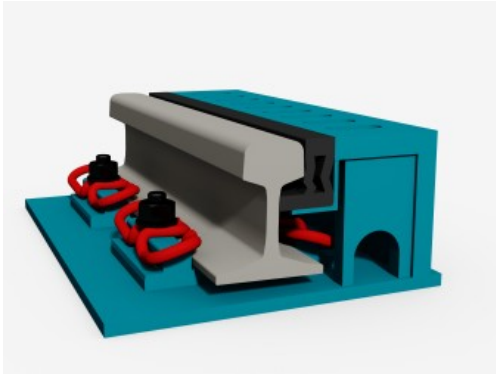




## Velosafe track



Construction of the velosafe track



Velosafe track prevents accidents

Tram tracks are a problem for cyclists. In order to reduce the risk of accidents, Dätwyler has developed a velosafe track, which prevents wheel seizing in the rail groove. Pedestrians also benefit from it as it is less likely to twist an ankle. Dätwyler achieves this by screwing a safety profile into the rail groove. A track guiding plate restricts the sine curve of the track wheel and thereby increases the lifetime of the rubber profile. The entire construction can be removed at any time and without much work, for example to perform rail work. The groove has a draining channel in order to completely rinse it, so dust and dirt do not build up in the groove. With the newly developed RAILRESTORE, Dätwyler is presenting another innovation. With this, one can eliminate rail breaks in shortest possible time at highest level.

**Dätwyler Sealing Technologies Deutschland GmbH**  
Germany - Waltershausen  
25, 209

Contact: Matthias Klug  
Phone: +49 3622 633451  
[matthias.klug@datwyler.com](mailto:matthias.klug@datwyler.com)  
[www.datwyler.com](http://www.datwyler.com)