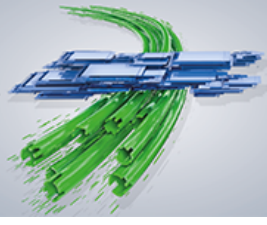




**InnoTrans 2018**  
18-21 SEPTEMBER  
BERLIN



**INNOVATIONS  
AND TRENDS**

## Capacitive sensor door handle



The new capacitive sensor door handle for intuitive ease of use

The new capacitive sensor door handle is ideally suited for the electronic unlocking of doors in transportation applications thanks to its intuitive ease of use and robust design. When a hand comes near or in contact with the active surface, the electronic unlocking mechanism is activated and the door can be opened. The modern and sleek door handle fits perfectly into any design of existing and new door applications. The door handle can be part of a TSI PRM compliant system that activates the electronic unlocking mechanism allowing the door to be opened with minimum effort. The product complies with EN 50155. For additional ease of use, an intuitive LED status indication is integrated at the top of the handle.

**EAO AG**  
**Switzerland - Olten**  
**6.2, 205**  
Contact: Andre Witschi  
Phone: +41 79 6326757  
[andre.witschi@eao.com](mailto:andre.witschi@eao.com)  
[www.eao.com](http://www.eao.com)

Subject to further change